

Bayside Place



*Is a safe
and
professional
treatment
facility.*

*We provide your
consumers
with a cost-saving
option to
hospitalization.*



Payment Options

- Medicaid
- Commercial Insurance
(with advance arrangements)



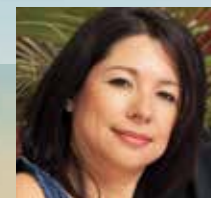
*Bayside Place is located in the heart of
downtown Madison, only blocks from
Lake Mendota and the state capitol.*



Bayside Place
702 W. Main Street
Madison, Wisconsin 53703
608-280-2587
www.journeymhc.org

Bayside Place

The place for safe
and cost-effective
hospital diversion



Bayside Place



is a program of *Journey Mental Health Center*. JMHC has been providing services to the citizens of Wisconsin for more than 65 years. We have an international reputation for the cost and clinical effectiveness of our community based service model for individuals with complex mental health problems. We were the first Center in Wisconsin to provide 24/7 professional mobile crisis intervention services. We are proud to expand our crisis services to include Bayside Place, a state-of-the-art hospital diversion facility that can save your county thousands of dollars in community hospital and/or state mental health institute costs.



Bayside Place is an ultra-modern 12 bed, 24-hour hospital diversion program. Bayside Place provides cost-effective intermediate crisis stabilization services to consumers at risk of hospitalization or in need of post-hospital support. Bayside is an excellent option for people who do not need the more restrictive environment of a hospital, but are not yet able to be in the least restrictive setting of independent community living.



- A structured, supervised setting providing 24-hour support
- Master's level Clinicians available 24 hours a day for treatment planning, individual support, group support, discharge planning, and referrals to ongoing services
- 24-hour paraprofessional presence, assisting with groups, ADLs, 1:1 observation for individuals who require additional support
- Recovery groups and activities that promote independence
- Prescribers/RNs available for medication evaluations, prescribing, health education and medication monitoring

